



TOUCH 02 L1

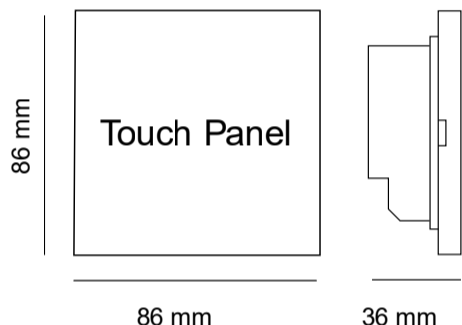
Power supply units and control gears - Alimentatori ed elettronica di controllo



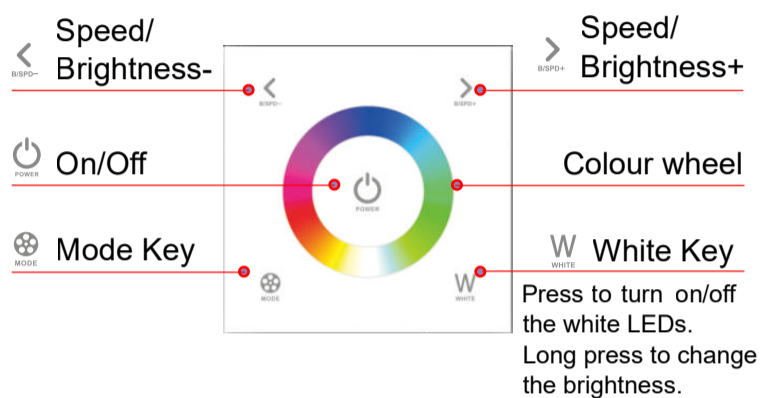
Technical specs:

TOUCH 02L1 RGBW Touch Panel

Input Voltage: 100~240Vac
 Output Signal: DMX512
 Working Temp.: -30°C ~55°C
 Dimensions: L86×W86×H36 (mm)
 Weight(G.W.): 225g



Functions:



* Long press to turn on/off the tone.

Changing Mode

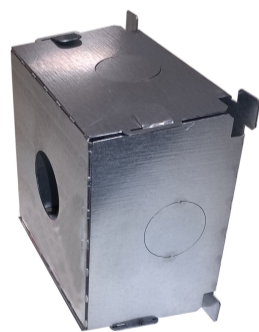
1. Static Red
2. Static Green
3. Static Blue
4. Static Yellow
5. Static Purple
6. Static Cyan
7. Static White
8. RGB Jumping
9. 7 Colors Jumping
10. RGB Smooth
11. 7 Colors Smooth
12. Static Black (only turn off RGB)

DMX512 addresses:

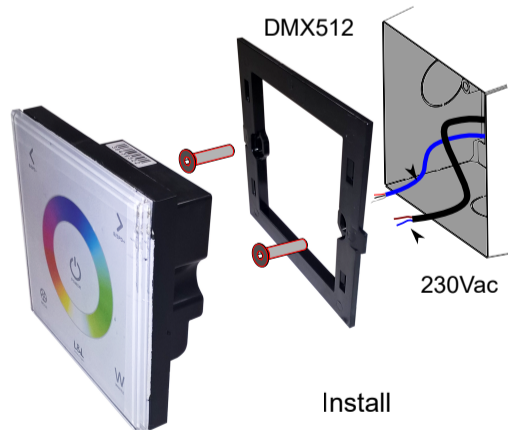
Zone 1: adrss 1/2/3/4

Installation Instruction:

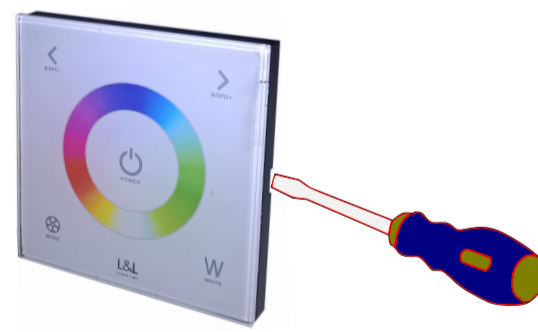
90x90x50 mm



Required outer casing, not included
WC0302

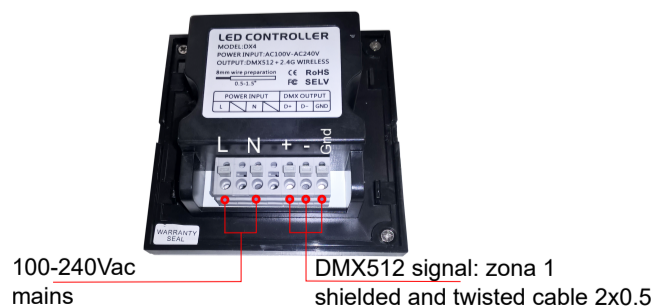


Install



Uninstall

Connection:





TOUCH 02 L1

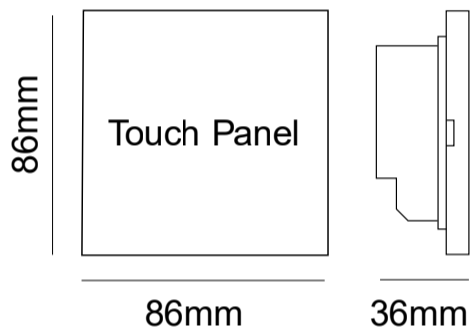
Power supply units and control gears - Alimentatori ed elettronica di controllo



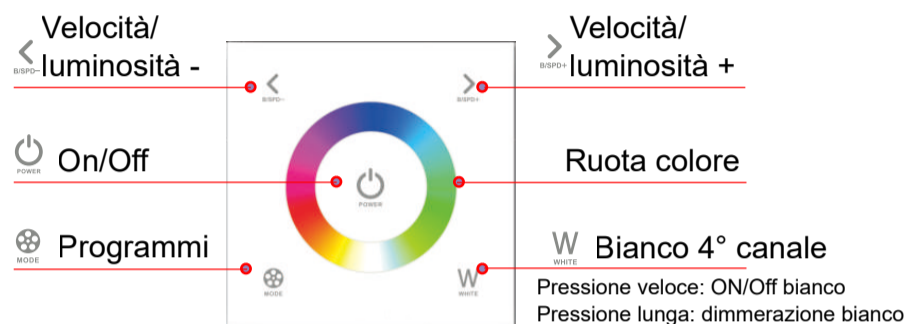
Dati tecnici:

TOUCH 02L1 RGBW Touch Panel

Input:	100~240Vac
Segnale uscita:	DMX512
Temp.funzionamento:	-30°C ~55°C
Dimensioni:	L86×W86×H36(mm)
Peso:	225g



Funzioni:



* Pressione prolungata per spegnere i toni pulsante

Programmi:

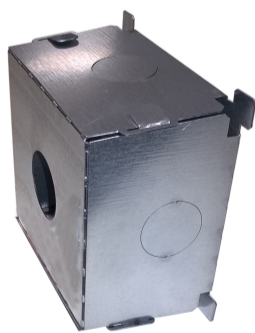
1. Rosso
2. Verde
3. Blue
4. Giallo
5. Rosa
6. Ciano
7. Bianco R+G+B
8. RGB Jumping
9. Cambio 7 colori a salto
10. Variazione RGB morbida
11. Cambio 7 colori morbido
12. Spegnimento R+G+B (uso bianco 4° ch)

Indirizzi DMX512:

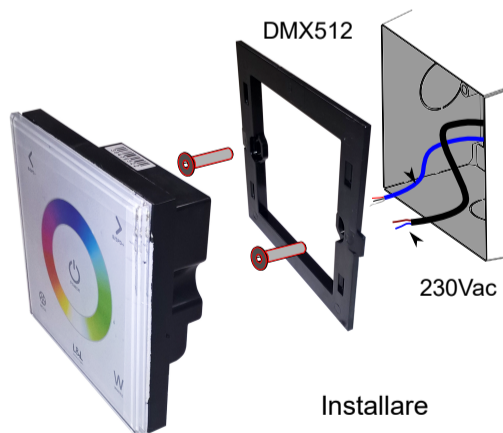
Zona 1: adrss 1/2/3/4

Installazione:

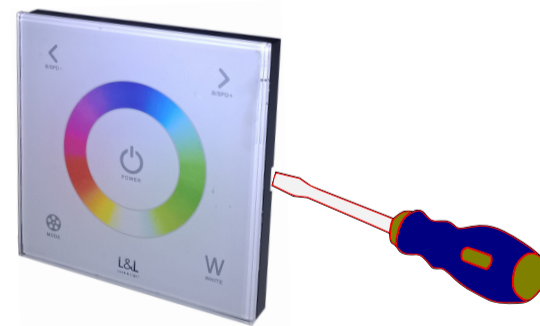
90x90x50 mm



Cassaforma non inclusa obbligatoria
WC0302



Installare



Disinstallare

Connessione:

